

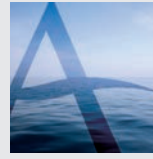


AQUALINE
MARINE LIMITED

The
Canterbury Widebeam

from 60ft x 10ft to 70ft x 12ft





AQUALINE
MARINE LIMITED

The
Canterbury Widebeam
from 60ft x 10ft to 70ft x 12ft

The Aqualine range of boats is unique offering the kind of quality and character that is normally associated with an expensive bespoke-built craft. It is made possible through a combination of innovative construction, the careful sourcing of fine materials and the employment of traditionally-skilled boat builders.

Aqualine has nearly a two decade long heritage of creating boats that are in a class of their own. It is this experience, combined with constant improvements, that makes them a byword for excellence. We don't compromise... so why should you?

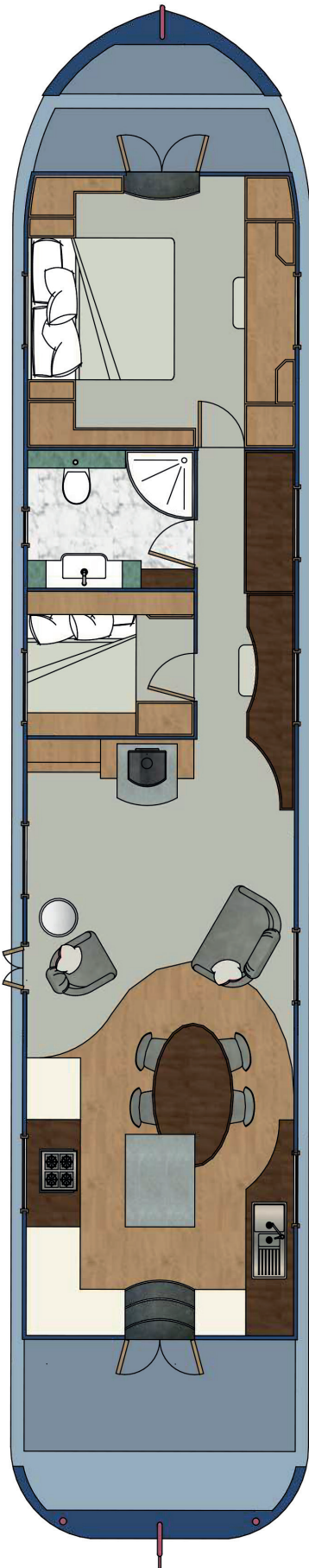
Every inch of an Aqualine boat has been designed and crafted with care, from bow to stern. These are boats you'll instantly feel at home in thanks to the use of warm, traditional materials combined with all the modern conveniences you could ask for.

They are also boats you can make your own. Not only can you choose from different models, you can also increase the length in 1ft increments up to 70ft. With a choice of different layouts to suit different needs, plus options to personalise your boat with luxury features and finishes, the Aqualine concept brings you so many of the advantages of a bespoke craft, but at production-built prices.



Photographs show The Canterbury 68ft x 12ft

The Canterbury



Internal features

LAYOUTS

The Canterbury widebeam boat is a truly luxurious craft with an impressive level of equipment as standard, this boat offers exceptional value for money. One of the other key attractions lies in the modular design which allows the layout to be altered to completely satisfy your requirements - rooms can be re-arranged to have the bedroom at the bow rather than at the stern or to include a second bedroom - whilst the length can be extended in one foot increments up to 70 feet to give extra space to existing rooms and to a maximum of 12 feet on the beam.

Lining and wood type

There's a wide range of internal finishes you can choose from for the walls and ceiling of your Aqualine boat, from Ash or Oak wood finish to painted panels and tongue & groove.

Flooring

Choose either or a combination of carpets with underlay or tiles for the bedroom, saloon, galley and bathroom flooring. Full hardwood flooring option is available as an upgrade.

Interior finishes

We offer a choice of colours on soft furnishings, tiles, carpets (with underlay) and work surfaces carefully selected for their aesthetic appeal as well as their durability.



Galley

Either a Split or U-shaped galley is available, both with solid or painted hardwood doors and a choice of granite or quartz worksurfaces.

There is a full-sized stainless steel hob and oven with an extractor fan available as an optional extra.

An integrated fridge is fitted as standard as is a deep full size stainless steel sink with monobloc taps over. The use of 'magic corners' provides an ingenious solution to the problem of hard-to reach corners and maximises on storage.



Saloon

A large saloon can easily accommodate plenty of free standing furniture and features a cast iron solid fuel stove. Depending on your layout there is a choice of various units to provide ample storage plus a 42" HD ready digital flat screen TV which can wall mounted above the stove or can be free standing. There is the opportunity to have various dining options.

Please ask for details to upgrade to a TV cinema surround sound system.





Bedroom

Choose from having a fixed Kingsize or Super Kingsize bed. There is plenty of storage with drawers under the bed, overhead cupboards with down lights. A cupboard with draw at either side of the bed plus more cupboard space either side of the bow doors, as well as full length wardrobes, two mirrored, all provide that all important hanging space.



Bedroom 2/Study (optional)

There are a host of design options to meet your needs exactly. From a single berth and a workstation area to make this a practical, multi-use room. A second single bunk can be provided which also folds down in the daytime to make the bed into a sofa/seating area. Alternatively an extendable double bed or fixed double bed can be fitted instead to make it a comfortable guest room. This bedroom can also be omitted giving more space in the saloon if preferred or the room can be left empty for you to populate with your own furniture.



Bathroom

The bathroom features a full-sized corner shower, with a mixer unit, surrounded by a chrome quadrant screen.

There is a vanity unit with hand basin and full wall mirror with illuminated pelmet over. There is a heated towel rail, and shelving to provide further storage. An electric macerator (pump out) toilet is fitted as standard.

A bath with shower over is available as an option, not to mention a choice of shower panel colours.

Feature lighting

Under gunwale lighting is added to the bedroom and corridor providing a soft ambient light making it perfect to navigate your way along the boat at night without wanting to put all the lights on. For safety and convenience the bow and stern steps both feature lights

External features

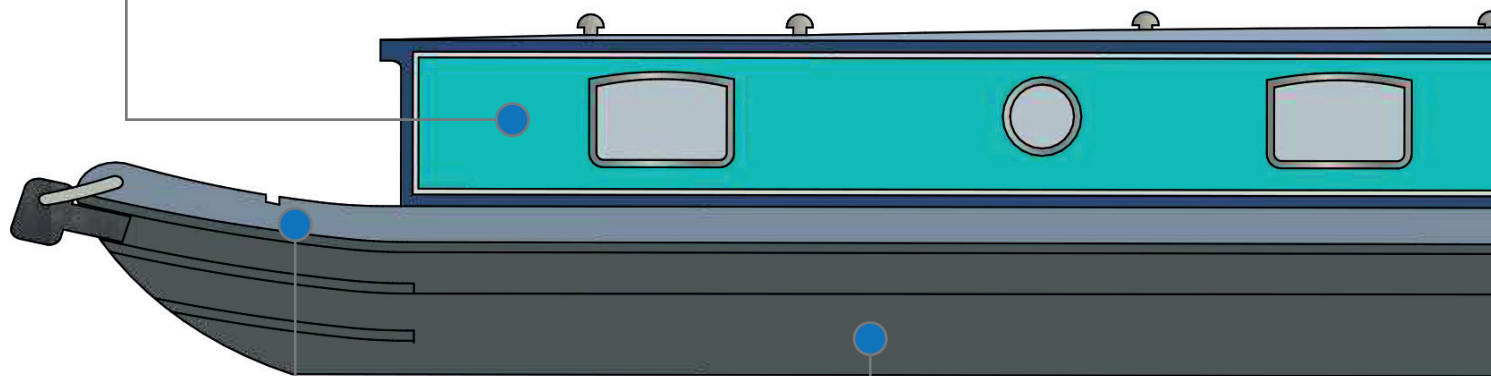
Steelwork

Enhanced hull design built to CBA Code of Practice guidelines, with two full-length rubbing strakes. The hull is blacked (blacking not suitable for salt/brackish water).

Hull blacking Upgrade

Have your hull prepared for cruising salt/brackish water. Also gives you, on average, a longer period between blacking.

Steel Plating	10mm/6mm/5mm/4mm	Rubbing strakes	Two full length (three at bow/stern)
Style	Cruiser, Trad & Explorer options	Handrails	T section easygrip with scuppers for drainage
Decks	All self draining	Bow lockers	Fitted as standard
Weed Hatch	Quick release	Anodes	4 x 2.5kg magnesium anodes
Fender eyes	Brass Recessed (chrome available)	Stern doors	Steel, lockable
Gas Locker	To hold 2 x 13kg bottles (one provided)	Bow doors	Hardwood, glazed and lockable



Bow lockers

Offer additional seating and handy storage for mooring pins, spare ropes and hose pipes.

Anodes x 4

These are designed to sacrifice themselves before the hull of your boat and along with the galvanic isolator help protect the hull.

Paint scheme

We offer a range of designs and paint combinations (single colour paint and coachline as standard) using a two part polyurethane paint. All decks, roof and gunwales are finished with a non-slip surface.

Add that extra touch of style and individuality

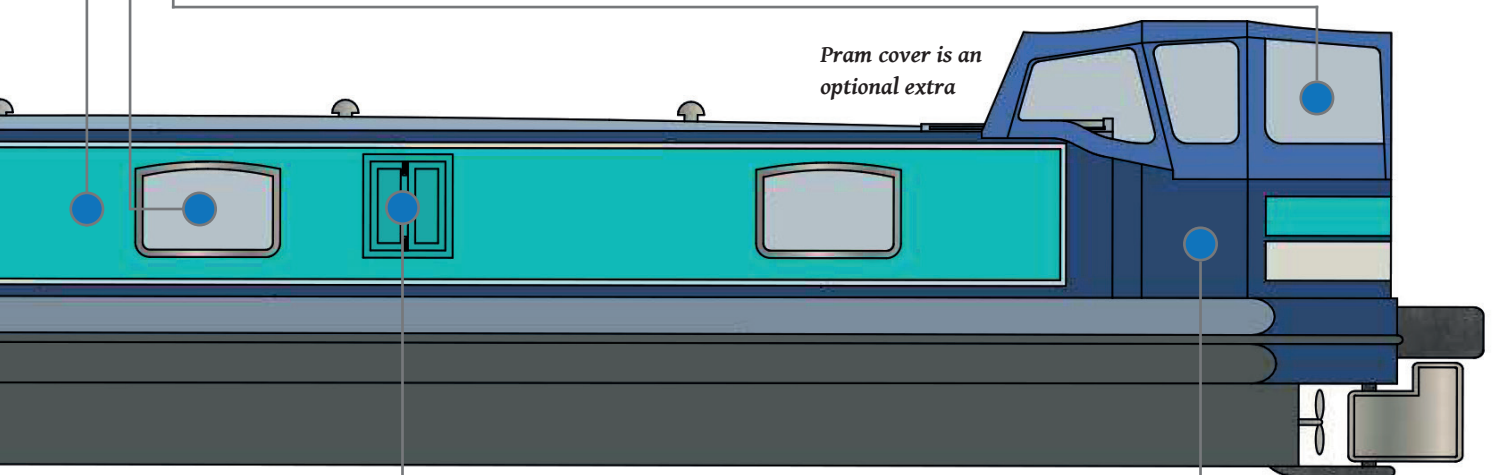
Make sure your boat is the envy of the waterways by adding an extra colour. Choose an additional colour for the roof, handrails, counterbands and painted panels or maybe all four.

Window sizes

A mixture of portholes and windows (and a set of side doors) is used in the boat - refer to individual layout diagrams. Changes to windows sizes can often be accommodated and we offer a choice between windows and portholes or a combination of both. Different window styles and double glazing are also available.

Cruising Pack

Front, rear and 6 side fenders, landline for connecting to shore power, mallet, 2 mooring pins, tiller and pin, windlass, lifebuoy, front and rear ropes, chimney and chinese hat, fire extinguishers, fire blanket, smoke and CO₂ alarm.



Pram cover is an optional extra

Side doors

Allows extra light and ventilation to flood in as and when you choose.

Explorer Pack (optional extra)

A distinctive curved stern that has an additional 2ft to maximise on al fresco dining or socialising with friends, whether moored or out cruising. Includes: Pram cover, Tek-Dek style flooring, wheel steering, Oak fold-out table, additional deck locker and surround seating including upholstery and steel work.

Technical

Engines

All the boats come with a 4 cylinder 2190cc Barrus Yanmar Shire 50hp diesel engine with PRM 150 hydraulic gearbox, one 50 amp and one 240 amp alternator. Standard control panel.

Depending on length/beam and/or usage we do recommend choosing a bigger engine.

Barrus Yanmar Shire 70hp, 4 cylinder 3319cc engine with a 50 and a 240 amp alternator. PRM 260 D2 hydraulic gearbox. Standard control panel. Upgraded control panel is available which features tachometer, oil pressure, voltmeter and water temperature gauges.

(All engines come installed, tested and running with one starter battery and a water lubricating stern tube).

Tanks

Water tank, approx. 170 gallons, fully baffled, stainless steel. Diesel Tank, approx. 95 gallons with drain off. Pressure tested. Black waste tank, 47 gallons. (Only available with a macerator pump out toilet).

Heating system

Diesel fired central heating system with timer which runs the Finrads and a heated towel rail in the bathroom, also provides hot water through a twin coil calorifier, with immersion. The calorifier is also connected to the engine cooling circuit meaning that the engine will heat the hot water.

240v power system

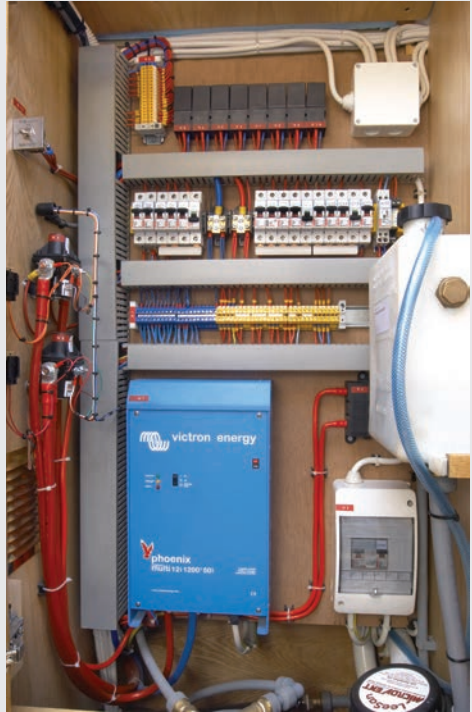
Power to brushed stainless steel double sockets is supplied via a 240V system fitted as standard. Tested and installed to RCD standard for connecting to shore power when moored in a marina. When cruising, power is supplied from a Victron 1600 inverter with 70 amp charger. Various inverter and generator upgrades are available to meet your requirements if required.

12v System

4 x 110 amp semi-traction domestic batteries, which are charged by a dedicated alternator or the Victron when connected to shore power. These are reconnected to a purpose-built distribution panel, and the system has circuit breakers for all of the appliances. The lighting is a combination of wall lights and LED down lighters throughout the boat. There is also under gunwale lighting in the corridor, and step lights at the bow and stern.

Bigger capacity and more robust batteries.

Upgrade to Gel Tubular batteries or Lithium ion with a storage capacity of 600 amh (amp hours) which are designed to accommodate regular charging and discharging..





Making buying or selling
a new or used boat
an enjoyable experience

DERBY OFFICE
NEW BOAT & BROKERAGE SALES
Mercia Marina, Findern Lane,
Willington, Derbyshire DE65 6DW
CALL 01283 890 888



HANBURY OFFICE
NEW BOAT & BROKERAGE SALES
Hanbury Wharf, Hanbury Road,
Droitwich, Worcester WR9 7DU
CALL 01905 953 888

ALSO AT:

DUNCHURCH POOLS MARINA
BROKERAGE SALES
Mercia Marina, Findern Lane,
Onley, Northants CV23 8AN

EVESHAM MARINA
BROKERAGE SALES
Evesham Marina, Kings Road,
Evesham, Worcestershire WR11 3XZ

COMING SOON - THAMES BOAT SALES
NEW BOAT SALES
Bray Marina, Monkey Island,
Bray, Maidenhead SL6 2EB

www.newandusedboat.co.uk